

Label Armor



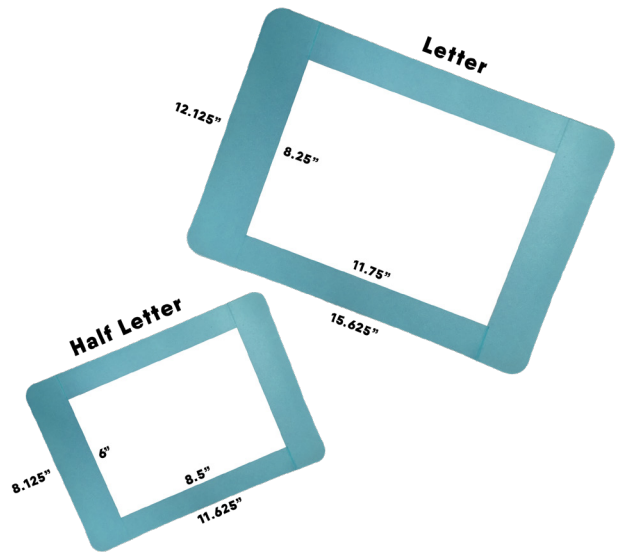
Floor Label Protectors

Floor labels have never held up well to the rigors of pedestrian and vehicle traffic. Idezi offers a new, impact-resistant solution: Label Armor. Label Armor is a self-adhesive label protector with optional colored frames. The clear window allows you to cover and protect labels on floors, doors, and walls. This unique product features a textured, anti-slip surface that provides extra safety and durability.

A Multi-Surface Solution

Warehouses, retail spaces, or storage facilities can use Label Armor on:

- Interior & Exterior Doors
- Bulk Locations
- Staging Lanes/Areas
- Totes
- Walls
- Walkways
- Stairways
- Shipping Docks



Stock Sizes & Custom

Label Armor is available in half letter and full letter sizes.

Half Letter Size:

Overall - 8.125" L x 11.625" W
Opening - 6" L x 8.5" W

Letter Size:

Overall - 12.125" L x 15.625" W
Opening - 8.25" L x 11.75" W

Custom sizes and colors are available. For more information please contact us.



Applying Label Armor

1. Clean the surface where the intended sign will be applied.
2. Ensure the prepared surface is above 50° F.
3. Apply your preprinted label to the surface. If your surface is porous we recommend our Surface Primer to help improve the adhesion of Label Armor.
4. Remove the film backings from the Label Armor and apply over the printed label.
5. Applying even pressure to the adhesive strips using our Seam Roller is recommended. We also recommend our Edge Fix to help extend the life of Label Armor around the edges.

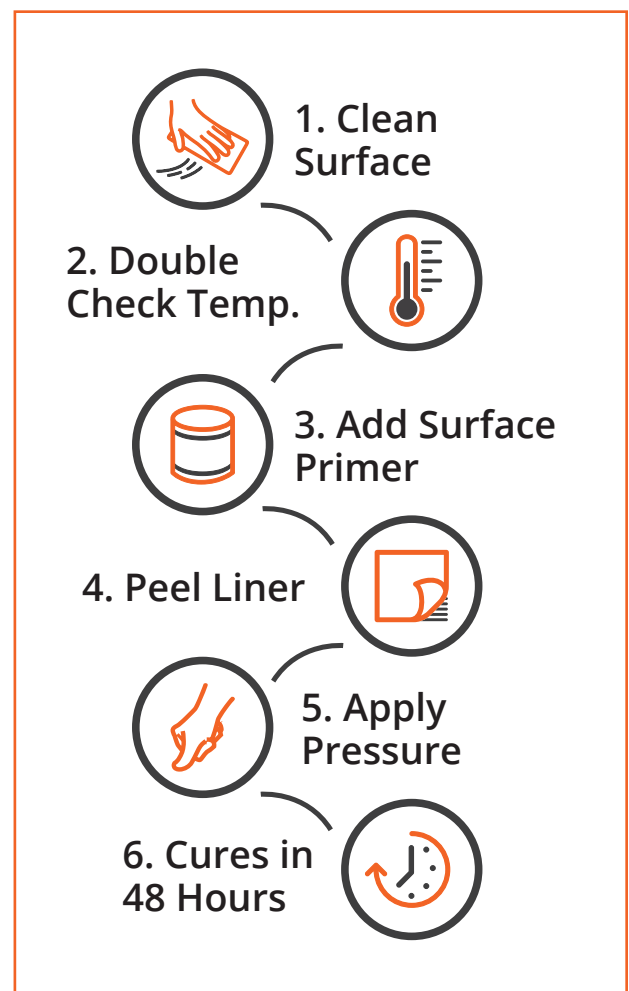
Please Note: There is a 48 hour curing time that is necessary for a complete, secure sealing of the adhesive.

Secure Application The First Time

In order to properly secure your Label Armor, cleaning and sealing it is crucial. That's why Idezi also offers Surface Primer and Edge Fix to help extend the life of Label Armor.

Surface Primer: For sealing porous surfaces such as wood or concrete, use Surface Primer. We recommend that everyone using Label Armor use Surface Primer prior to installation for ultimate durability. Just one liter of Surface Primer can cover five square meters of surface. Simply brush into place on a clean surface. Allow to dry and install the label then apply Label Armor over the label.

Edge Fix: For added durability that prevents Label Armor from lifting due to extreme conditions like pallet drag or fork drag, apply Edge Fix around the edges of Label Armor. This creates a hardened smooth edge that extends the life of Label Armor.



The world's *toughest* and *most durable* self-adhesive floor label out there.